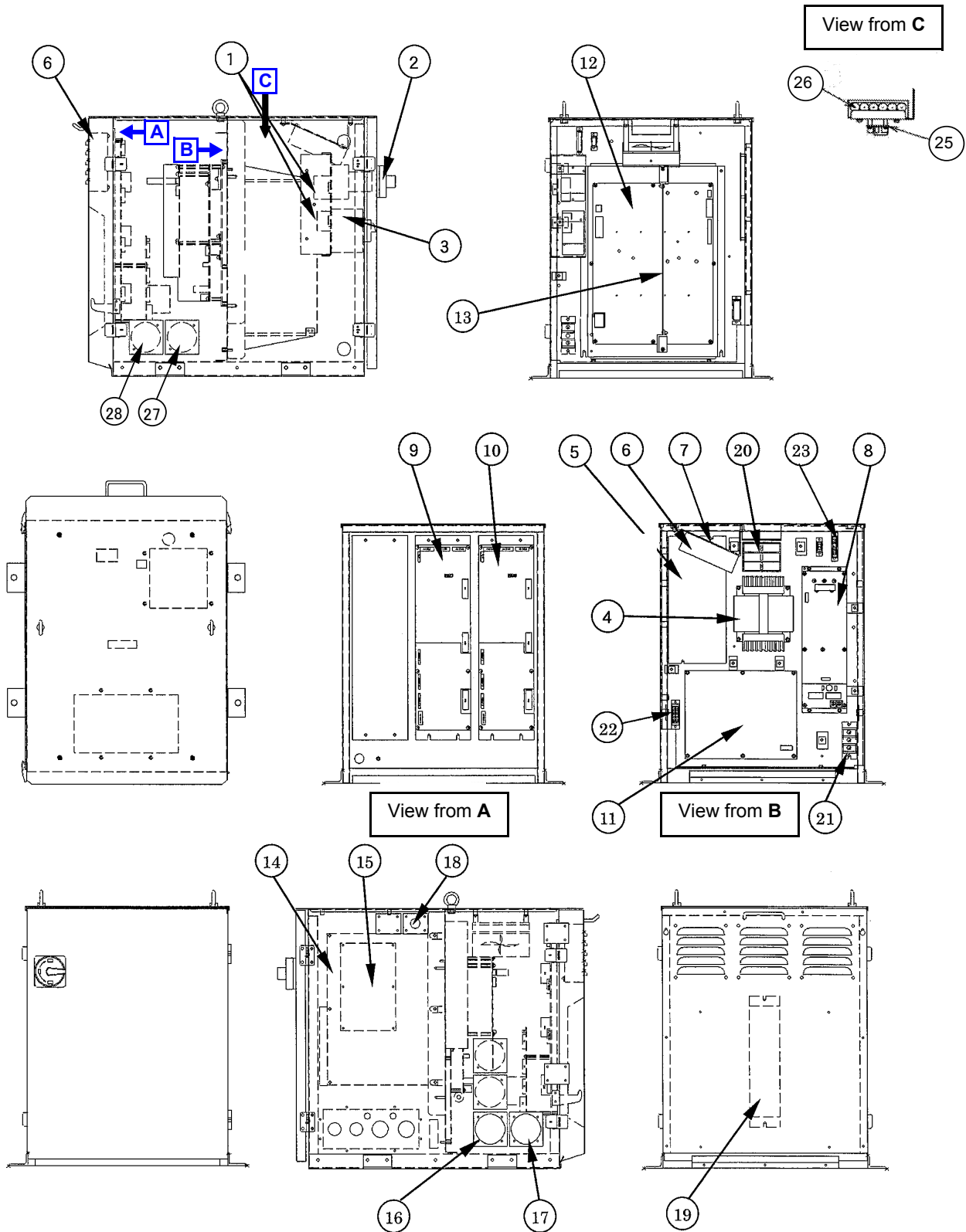


## 2. Configuration

### 2.1 Controllers: Schematic drawings (excluding welding unit)



## 2.2 Controller: Parts list

<Class> A: Consumable parts, rather short replacement cycle.  
 B: Assemblies and parts of high frequency in motion.  
 C: Important electric parts.  
 D: Parts rather long replacement cycle.

No.	Description		Part number	Q'ty	Note	Class	
1	Anti-surge Parts		AEB40054	1		D	
2	Switch		P132V/SVBSW	1		C	
3	Breaker		GV2ME22	1		C	
4	Transformer		UTU5305	1		D	
5	DC Power Supply		ZWQ1305225LW	1		C	
6	Cooling Fan		CN60B3	5		B	
7	Cooling Fan support		AKC30107	2		D	
8	Servo Power		AED00130	1		C	
9	Amplifier 1	YA-1RCR41***	T / Y spec. (TB-1400)	AED01229	1		C
		YA-1RCR61***	T / Y / R / U spec.	AED01229	1		C
			E spec.	AED01250	1		C
		YA-1RCR81***	T / Y / R / U spec.	AED01233	1		C
E spec.	AED01251		1		C		
10	Amplifier 2	YA-1RCR41***		AED01258	1		C
		YA-1RCR61***		AED01228	1		C
		YA-1RCR81***		AED01232	1		C
11	Power Card		ZUEP5757	1		C	
12	Main CPU Card		ZUEP5585	1		C	
13	Servo CPU Card		ZUEP5587	1		C	
14	Sequencer Card	T / Y / R / U spec.		ZUEP5711	1	Open collector output	C
		E spec.		ZUEP5725	1	Open emitter output	C
15	Safety Card		ZUEP5702	1		C	
16	Connecting cable		AWC25032LM	1	4 m	C	
17	Motor Cable		AWC32788LM	1	4 m	C	
18	TP Cable		AWC32693LT	1	10 m	B	
19	Regenerative resistance		CAWBJ282-33J	1		C	
20	Fuse holder	T / Y spec.		BM6033PQ	1	Fuse: 250VTL15A (3 pcs.)	D
		E / R / U spec.		BM6033PQ	1	Fuse: FNW15 (3 pcs.)	D
21	Terminal block		OTB358N3PC	1		D	
22	Harness 7		AWC42023	1		B	
23	Harness 33		AWC40810	1		B	
25	BAT relay card		ZUEP5765	1		C	
26	Lithium battery		ER6VCT	6		A	
27	Harness A1		AWC32791	1	(Note)	D	
28	Harness A2		AWC32792	1	(Note)	D	

**<Note> About “Harness A1” and “Harness A2”**

As for YA-1RCR81\*\*\* controllers for handling, those harnesses are provided.